

Minikins RTi / QTî / THî

Battery replacement

EMS Brno, April 2020

Michal Bellan

Notice:

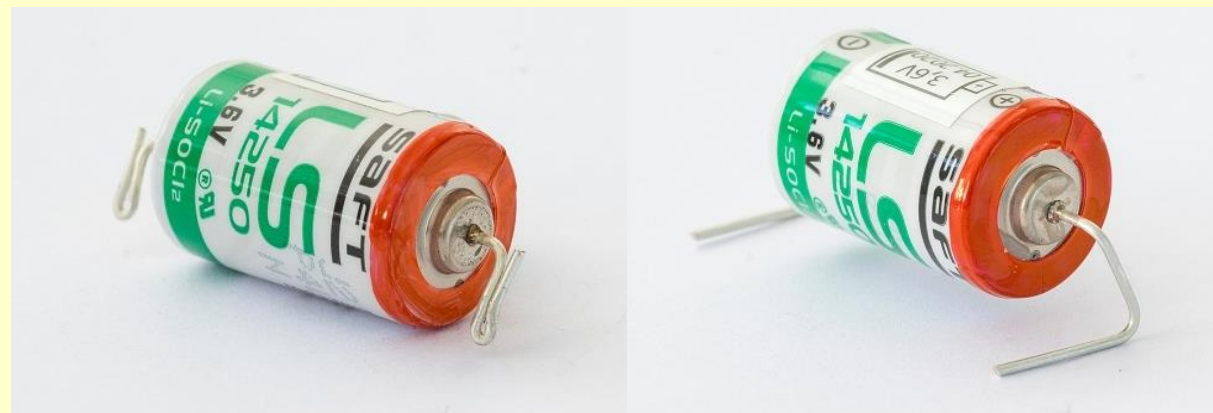
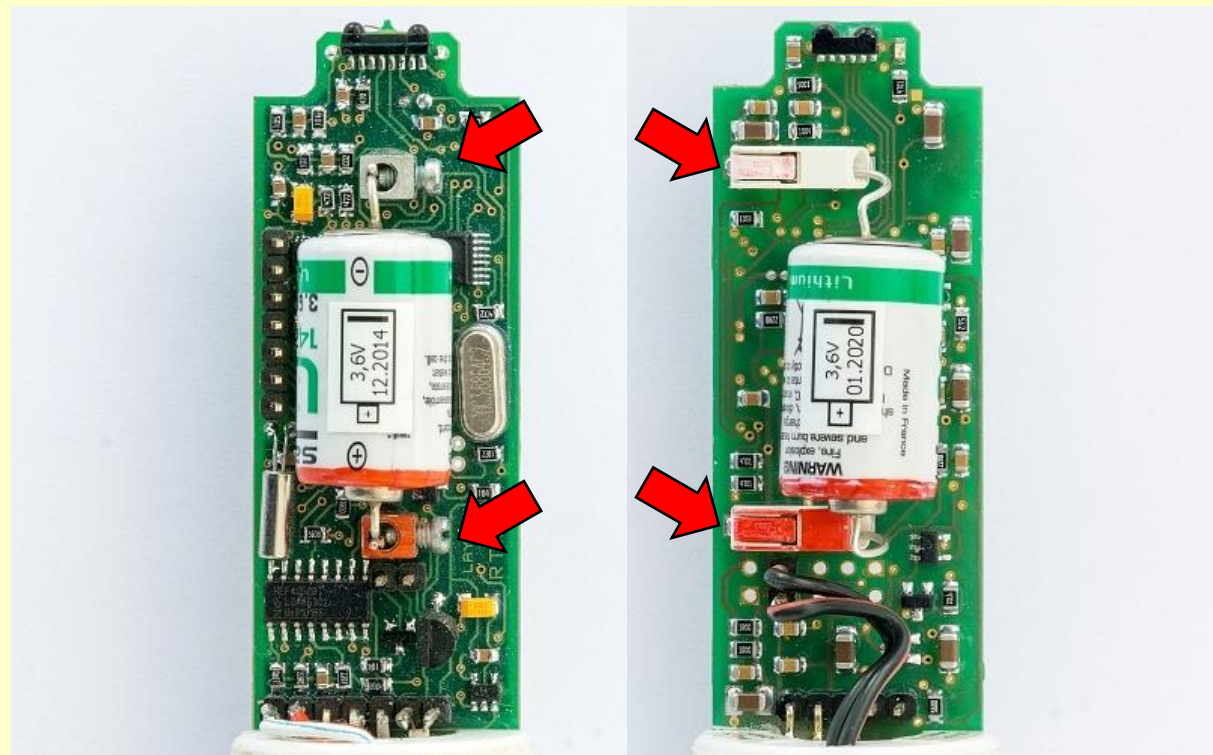
Be advised that there are two models which differ in battery terminals:

- Minikin with screw terminals
- Minikin with screwless terminals - Wago (serial number starts with "A")

Both models use LS 14250 CN battery, single cell, 3.6 V, 1/2AA, Lithium Thionyl Chloride, 900 mAh with axial wires.

The main difference between those models is in the wire adjustment of batteries – see pictures.

When asking manufacturer for new batteries, please specify the model (incl. prefix of serial number) and we will adjust battery terminals accordingly.



Related tools and accessories:



Minikin sensor
RTi / QTI / THi



Wrench size 8



Tweezers



Minikin opener



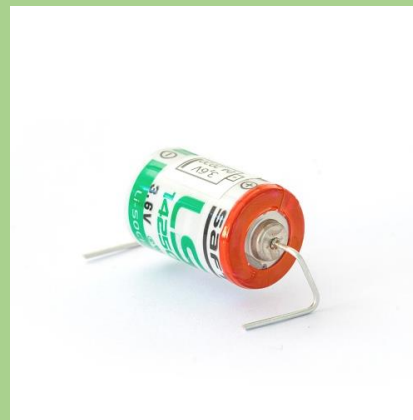
Dessicant bag



Battery for screw
terminals



Screwdriver



Battery for screwless
terminals



Wago single
squeezer



IrDA/USB cable

Sensor removal

Remove the sensor (datalogger) body from the radiation shield. For long life maximal reflection are the plates made from aluminium coated by baked varnish. The plates need relatively gently handling.

- Unscrew three nuts from the bottom of the radiation shield and remove triangle base with the sensor

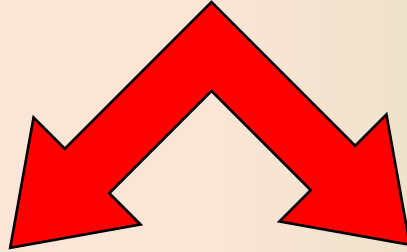


Electronics removal

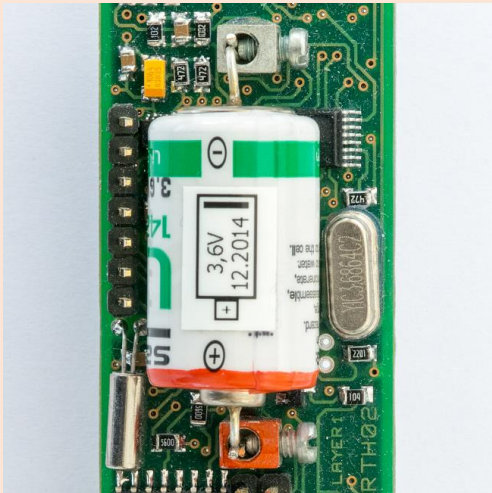
- Screw out the stainless case. Use the tool as a counterbalance.
- Gently pull out the stainless case.



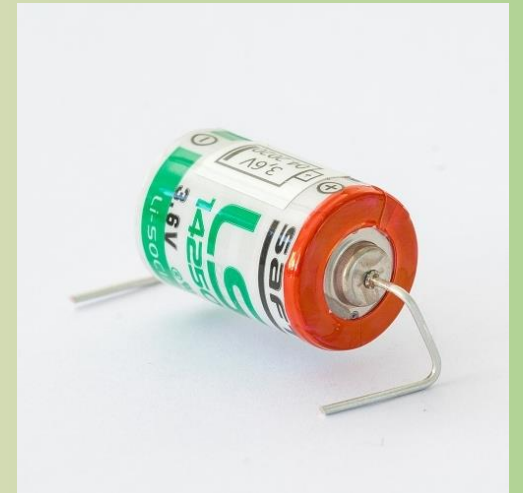
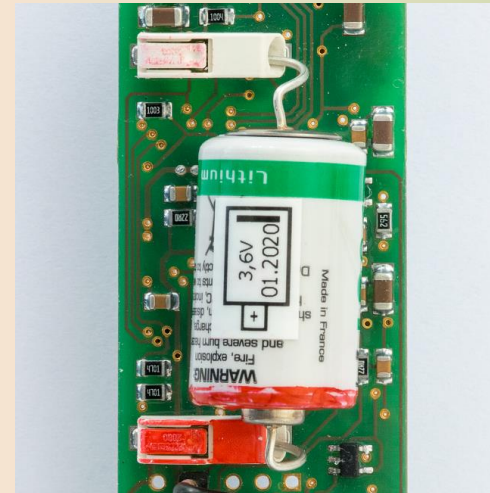
Battery replacement procedure



SCREW TERMINALS



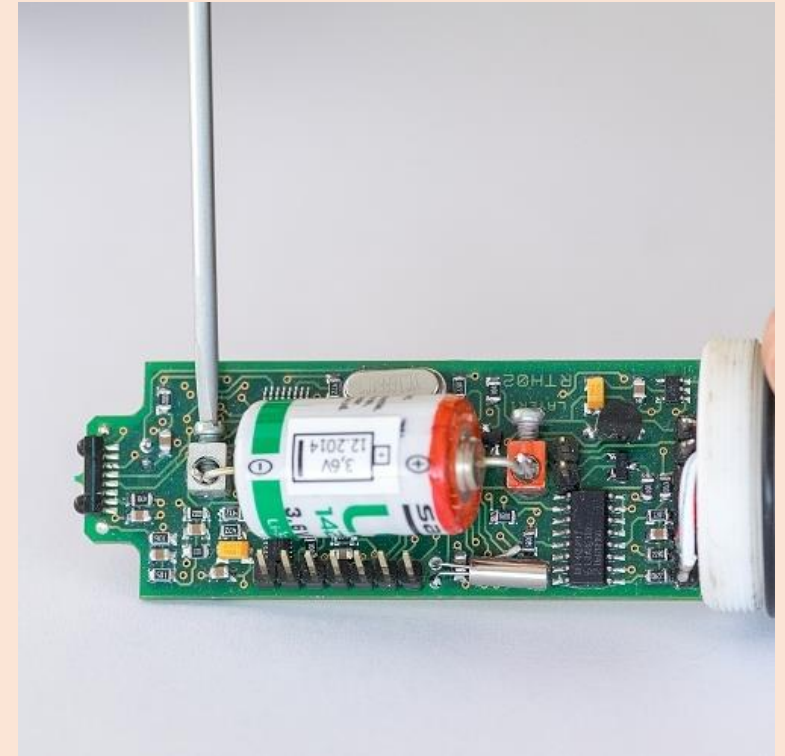
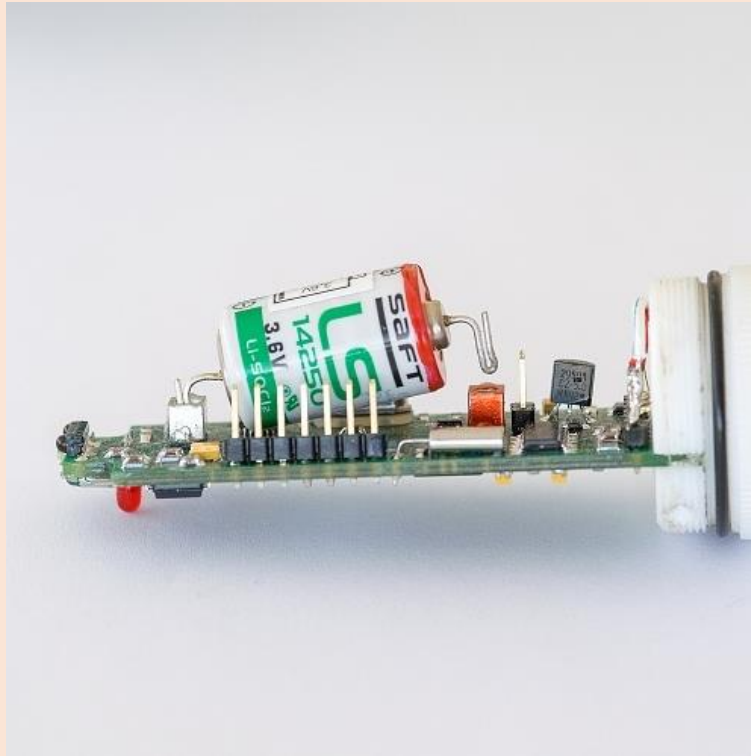
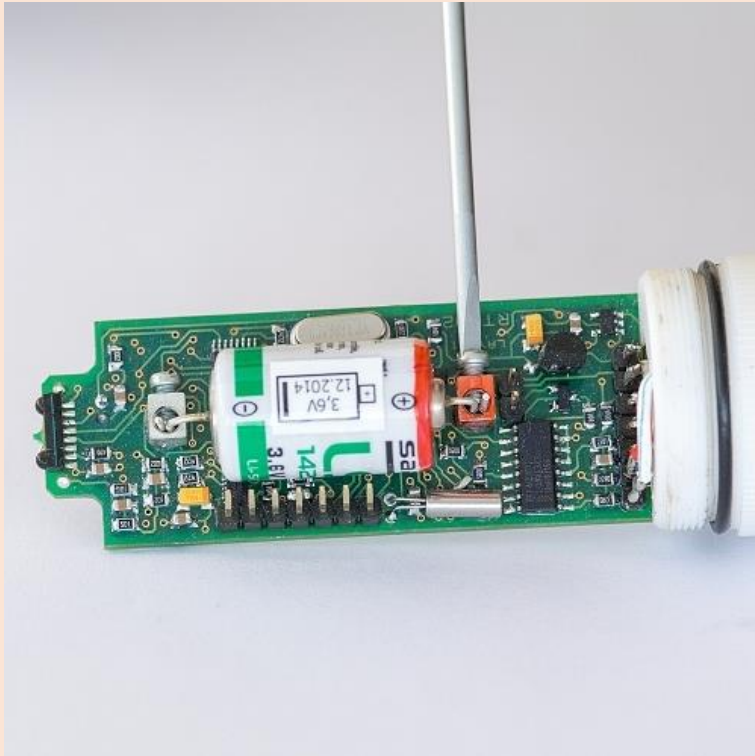
SCREWLESS TERMINALS



For alternate parts of manual, due to terminal type, follow background color

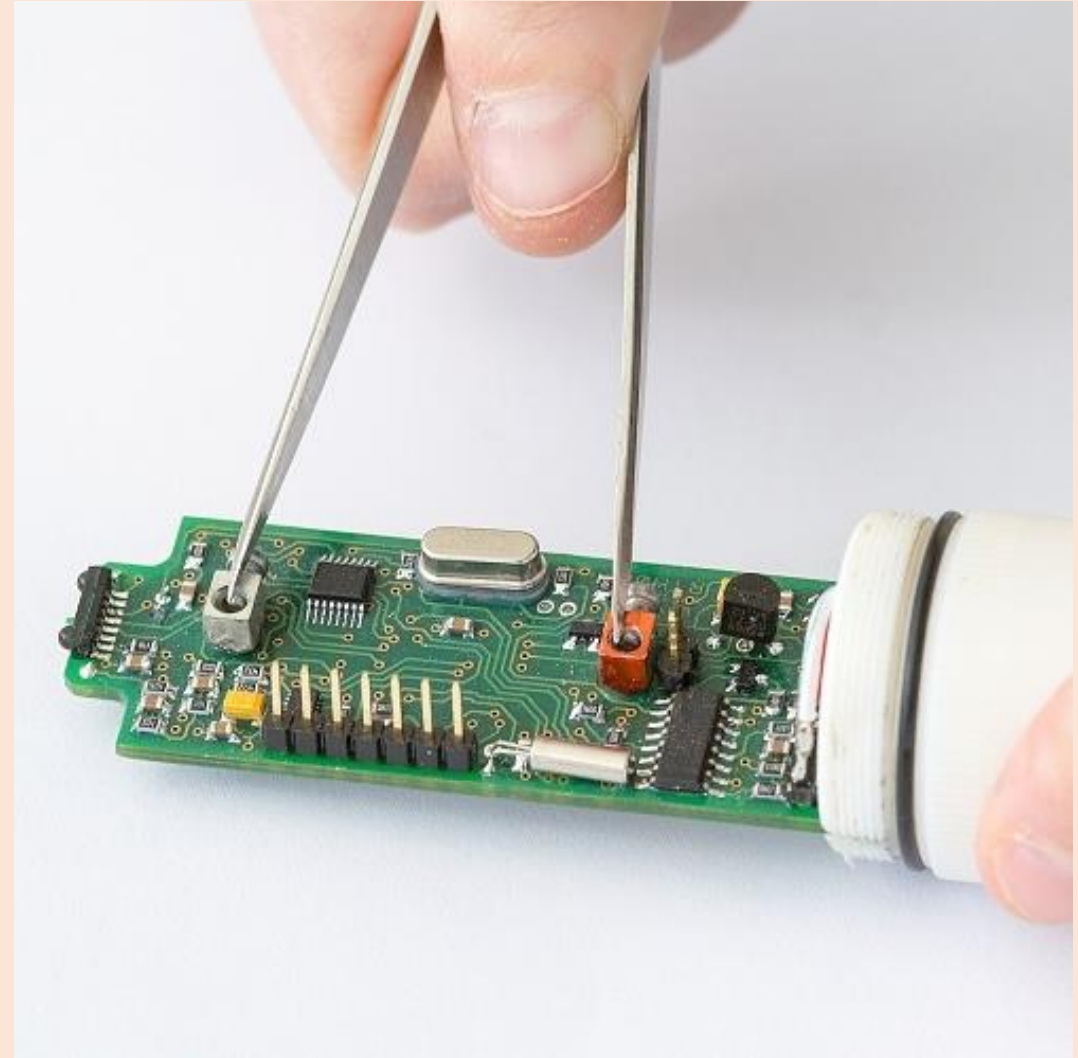
SCREW TERMINALS - battery removal

- Remember the battery polarity.
- Screw out the positive battery terminal and lift the battery wire.
- Screw out the negative terminal and remove the battery.



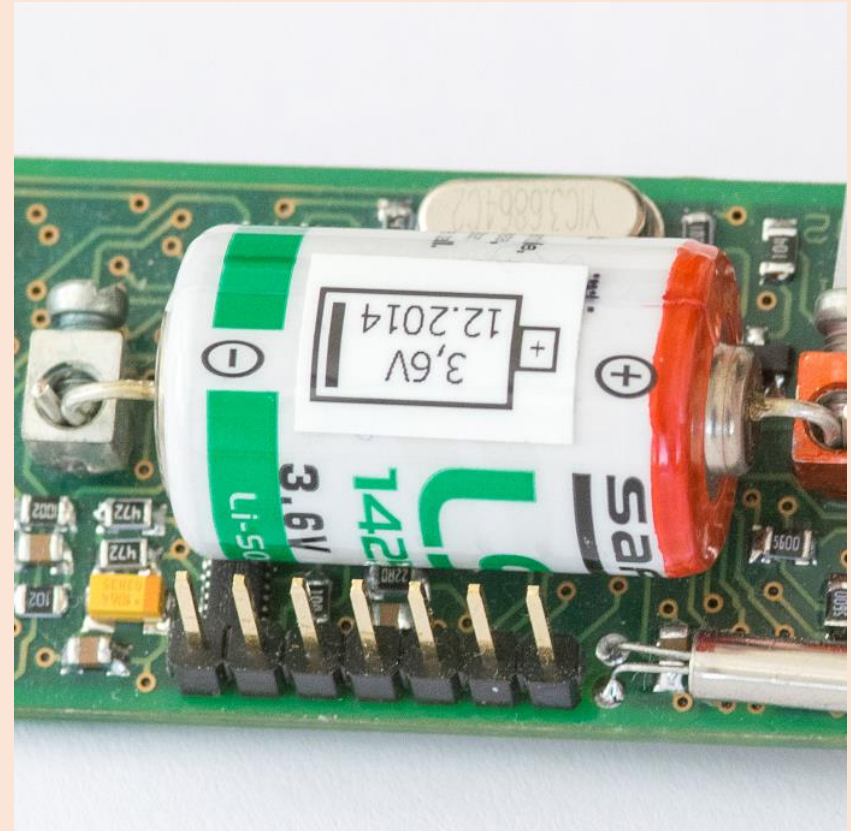
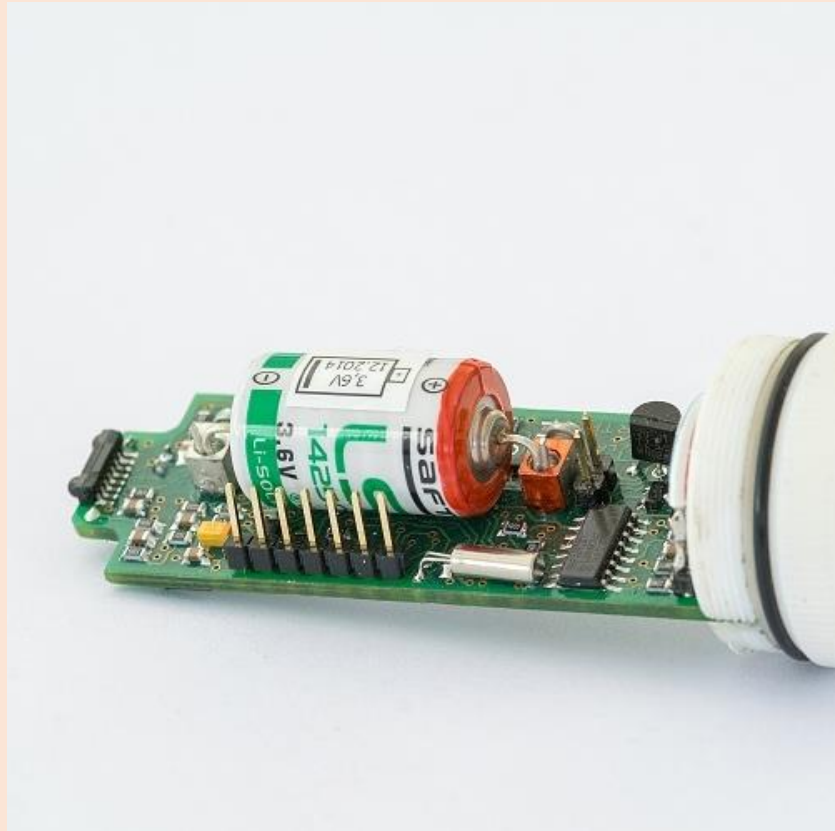
SCREW TERMINALS - battery reset

- Short circuit the battery terminals. It will reset the battery life counter. Tweezers is the ideal tool for this.
- Note that the battery counter can be reset also from Mini32 (Configuration>More>Batt. reset)



SCREW TERMINALS - battery inserting

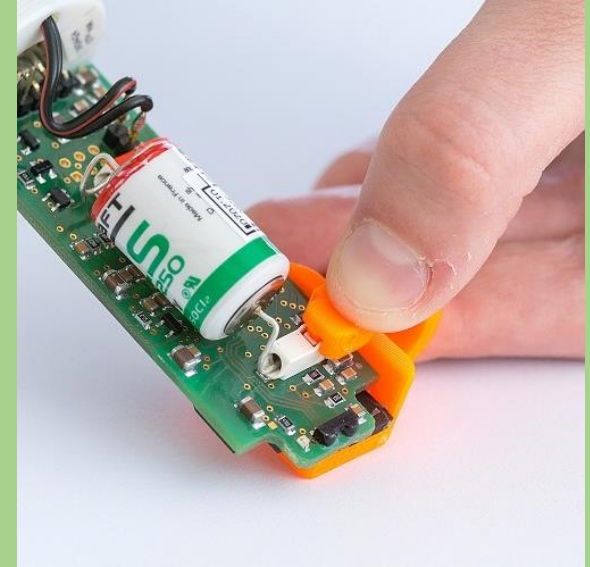
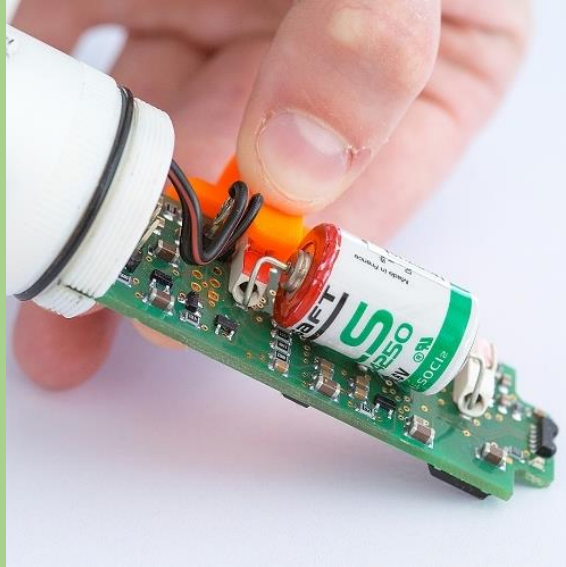
- Insert new battery back to terminals. Consider polarity! Screw it up firmly.
- It is good idea to write down the time stamp of battery replacement.



SCREWLESS TERMINALS - battery removal

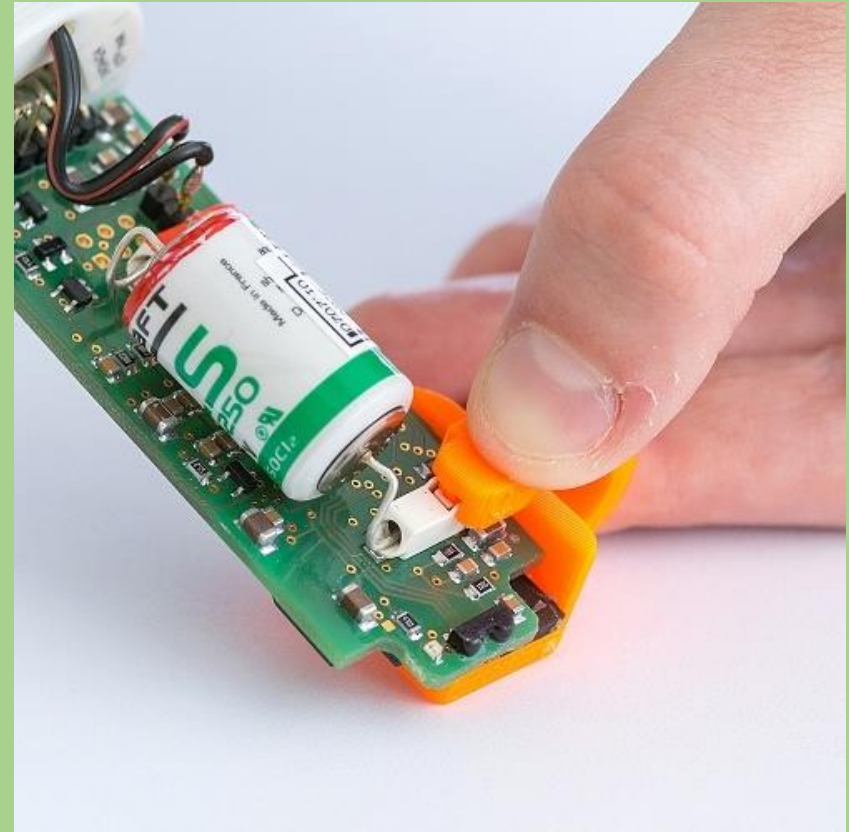
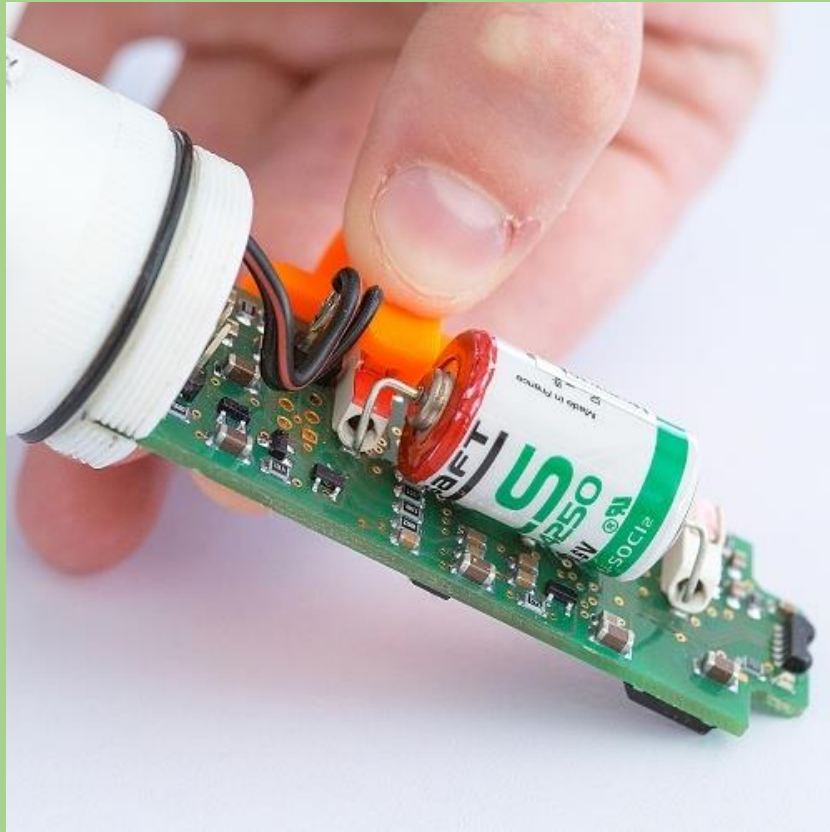
- Remember the battery polarity.
- Use special tool. Insert the tool on the PC board exactly according to pictures.
- Squeeze the tool and remove the battery wire.

Note: The plastic cover of terminals is fragile so they can easy break. Handle with care!



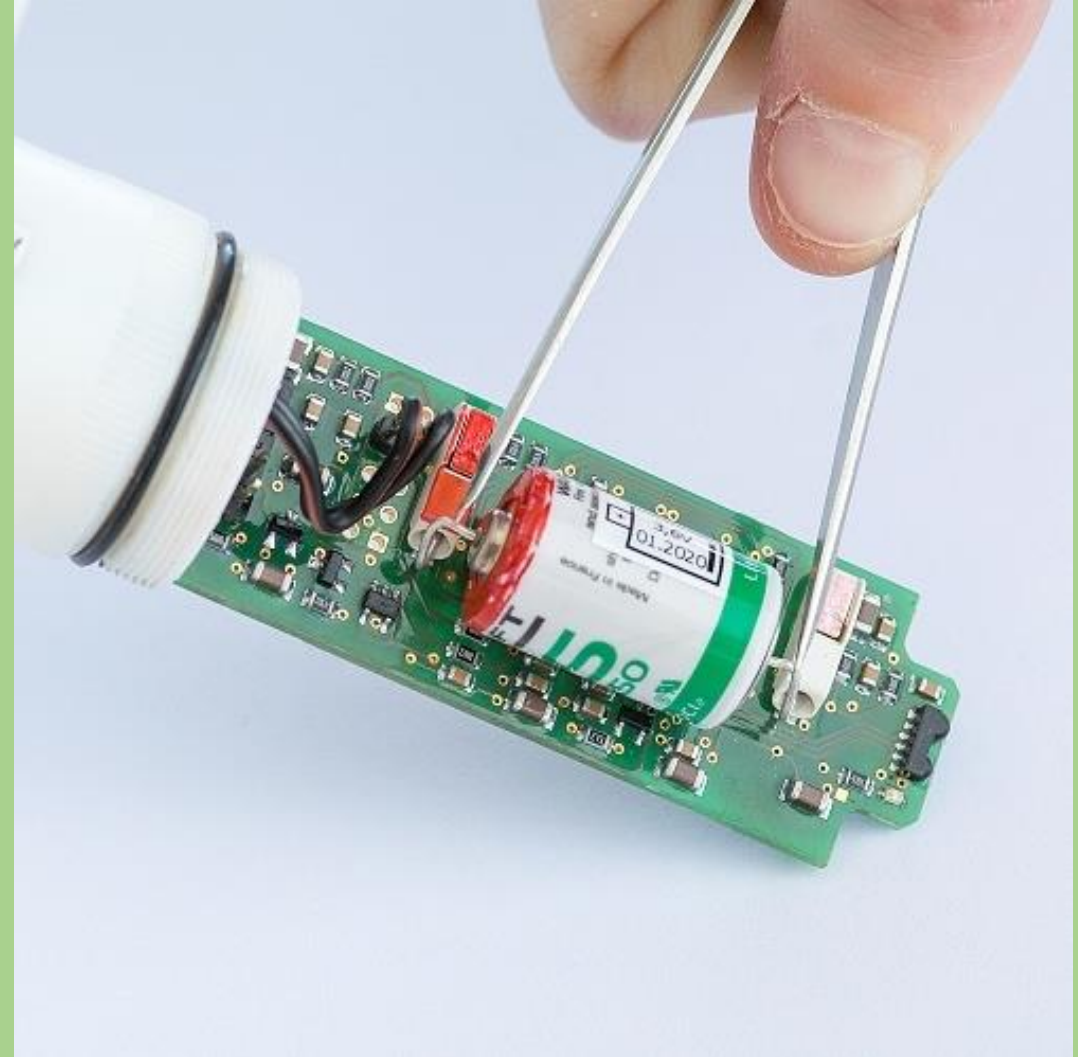
SCREWLESS TERMINALS - battery inserting

- Use special tool and gently insert the battery terminals
- Notice the polarity – “+” on the battery (in red) and “+” on the PCB.
- It is good idea to write down the time stamp of battery replacement.



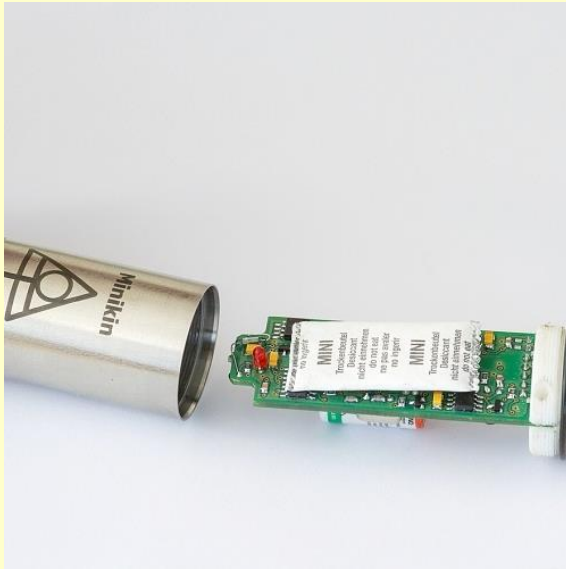
SCREWLESS TERMINALS - battery reset

- Short circuit the battery terminals of new battery for few seconds - see picture. This will reset the battery life counter. Tweezers is the ideal tool for this.
- Note that the battery counter can be reset also from Mini32 (Configuration>More>Batt. reset)



Putting back together

- Put new desiccant bag.
- Set the stainless case back over the electronics.
- Screw it up gently, only by hand. Be careful not to screw “over the thread”.
- For tightening, use the tool the same way as earlier. Loosen up the case for a few degrees after screwing up for later easier release.



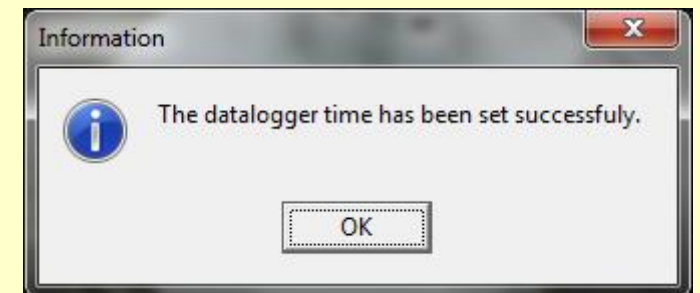
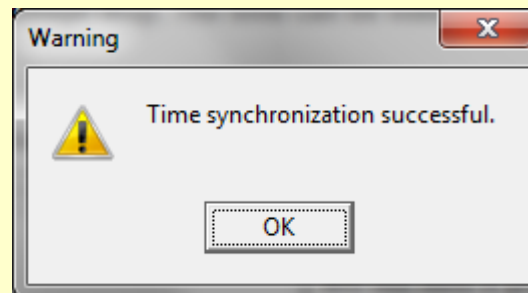
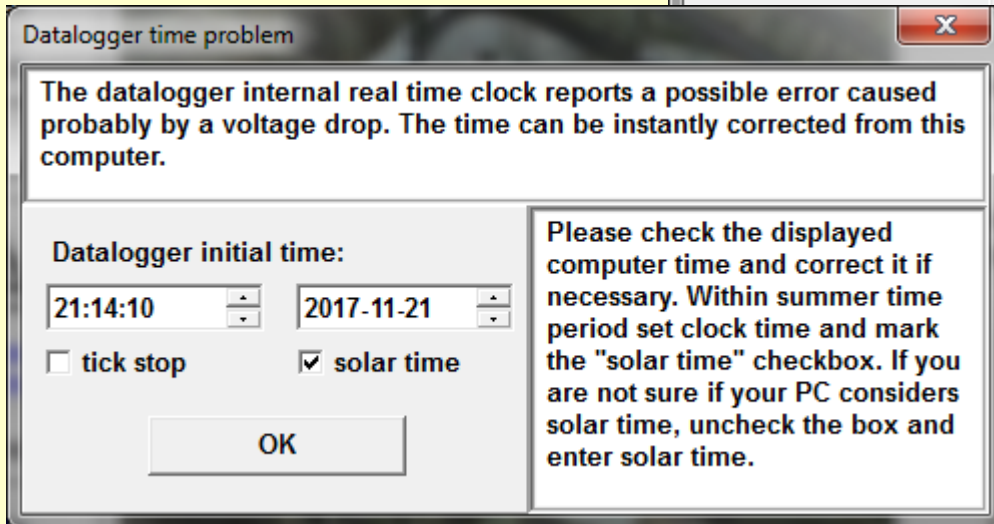
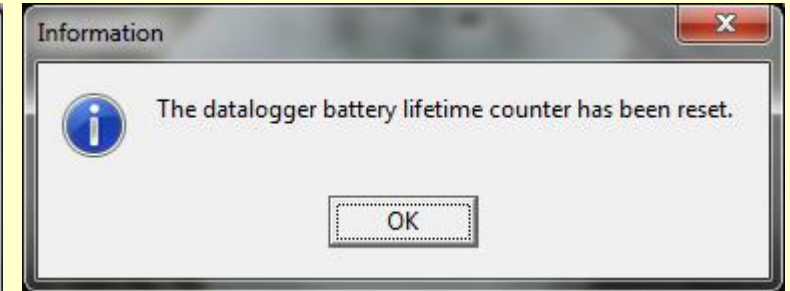
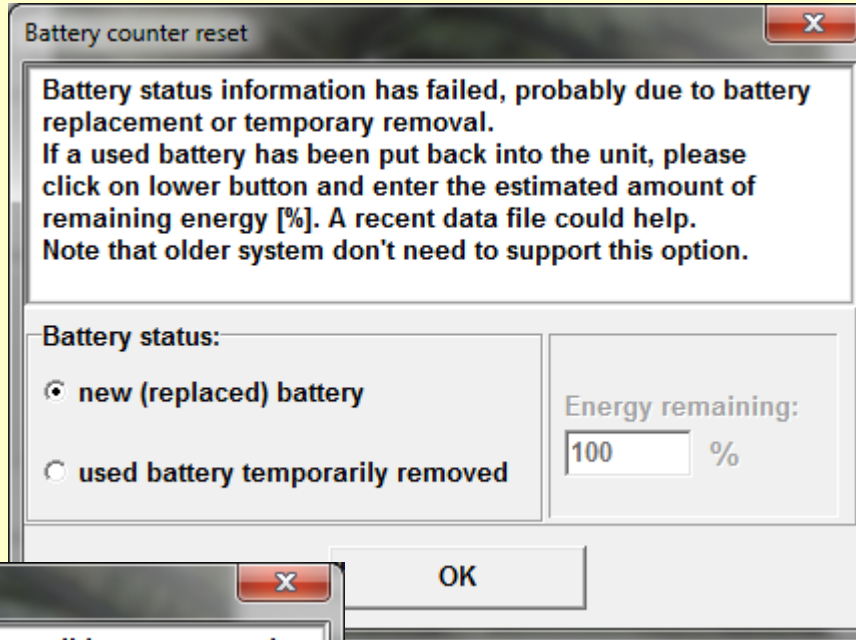
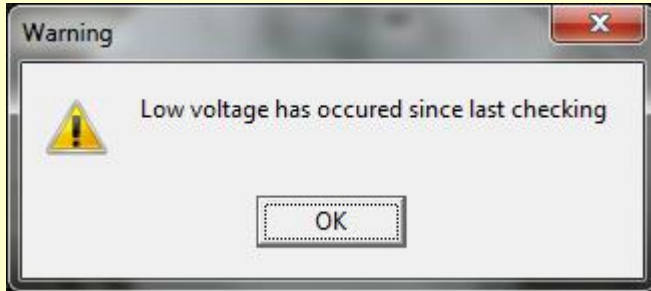
Final assembling

Put the sensor back to the radiation shield and screw up the nuts.



Sensor set up

Run Mini32 and go to Configuration. You will pass following windows and messages – just accept them:



Battery counter

If the procedure of *Battery counter reset* did not take place, apparently the battery short circuit has been performed incorrectly. You must reset the battery counter manually: Configuration > More > Batt. reset.

Minikin - SETTING UP Mini32 v. 10.2.10.0

More >>

Get

Send

Save setup

Read setup

Capacity info

Close

PC Time: 08.04.2020 14:52:18
DL Time: 08.04.2020 13:52:17

Device type: QTi
Device code 40
Batt: 3,47 V

Periods:
measuring 4 h
storing 4 h

Battery remains: 100%
(approx. 1946 days)
Memory capacity: 4681 days
Overwrite ENABLE

ON/off

ON

#	Type	ON/off	Range	Gauge	Description
1.	Voltage	ON	15 mV	PAR [$\mu\text{mol}/\text{m}^2, \text{sec}$]	
2.	Temperature	ON	---	Temperature [$^{\circ}\text{C}$]	

Final check

Go to back to Mini32 main screen and push "On-line" button. Check the actual values and all status information. You might also download data in order to be sure that there has nothing happened with memory structure.

Minikin - DATA HANDLING Mini32 v. 10.2.10.0

Actual values

Regular reading

☐ el. values

PrgmCalc

Close

PC Time: 08.04.2020 14:54:27
DL Time: 08.04.2020 13:54:27

ON

Device type: QTi
Device code: 40
Batt: 3,47 V

Periods :
measuring 4 h / warm-up 0 s
storing 4 h

Battery remains: 100%
(approx. 1946 days)
Memory capacity: 4681 days
Overwrite ENABLE

#	Type	No. Gauge	Electrical	Physical	Description
1.	Voltage	PAR [umol/m2,sec]	0,0429766	5,80614	
2.	Temperature	Temperature [oC]	1095,11	24,4253	

Good luck!