

Minikin ERi

with serial number starting with „A“

Battery replacement

EMS Brno, April 2021

Michal Bellan

Related tools and accessories:



Minikin ERI



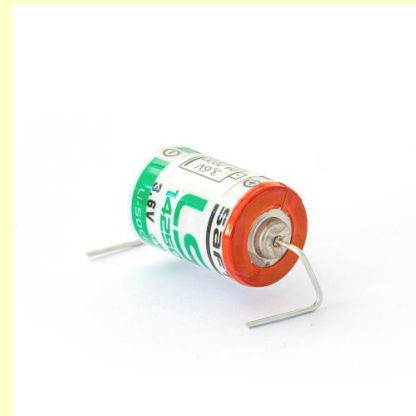
Tweezers



Dessicant bag



IrDA/USB cable



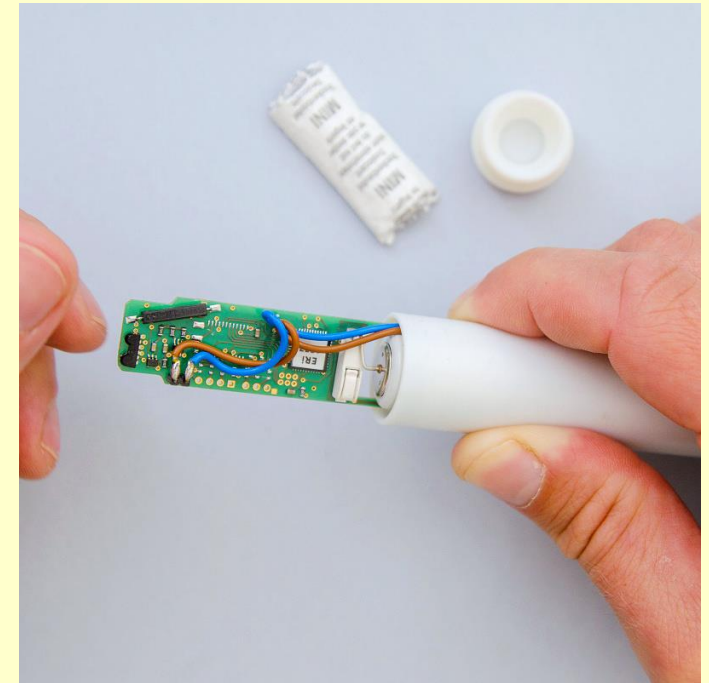
Battery for screwless terminals (Wago)



Single squeezer for Wago

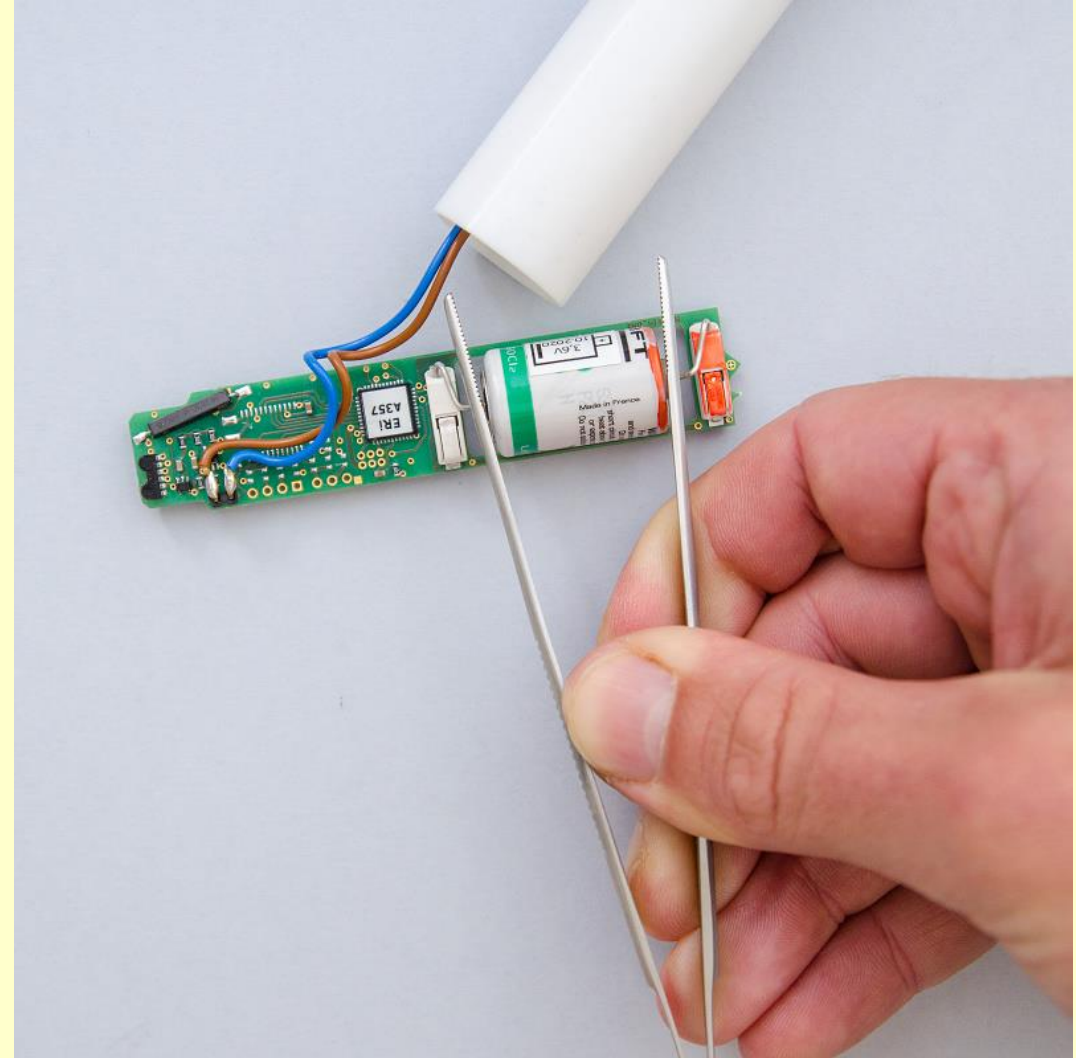
Electronics removal

- Unscrew the datalogger plug.
- Gently pull out the electronics from the datalogger case.



Battery reset

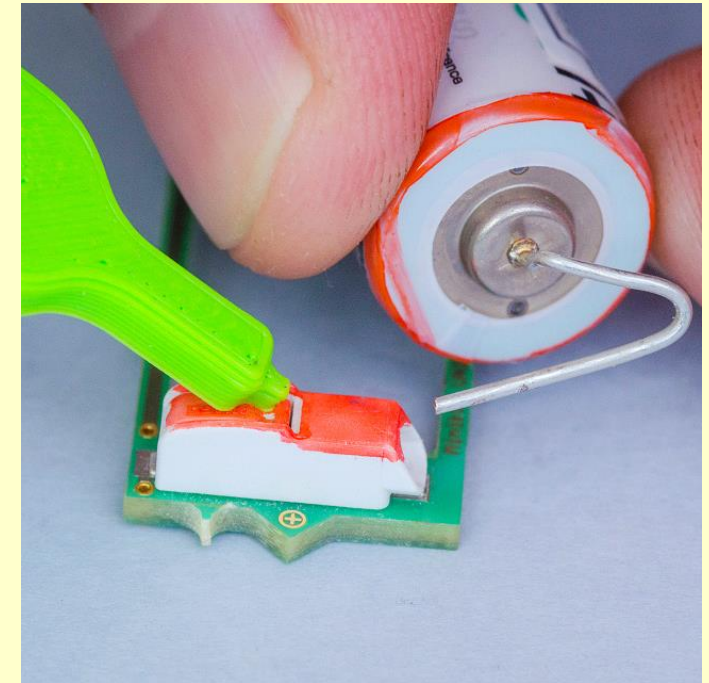
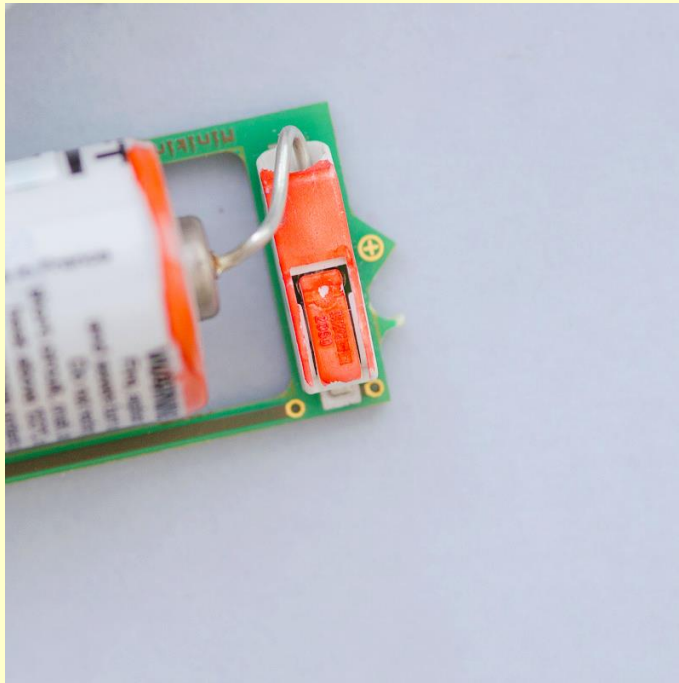
- Short circuit the battery terminals of old battery for few seconds - see picture. This will reset the battery life counter. Tweezers is the ideal tool for this.
- Exceptionally you can reset the counter also by short circuiting of new battery – not more than one second.
- Note that the battery counter can be reset also from Mini32 (Configuration>More>Batt. reset)



Battery removal

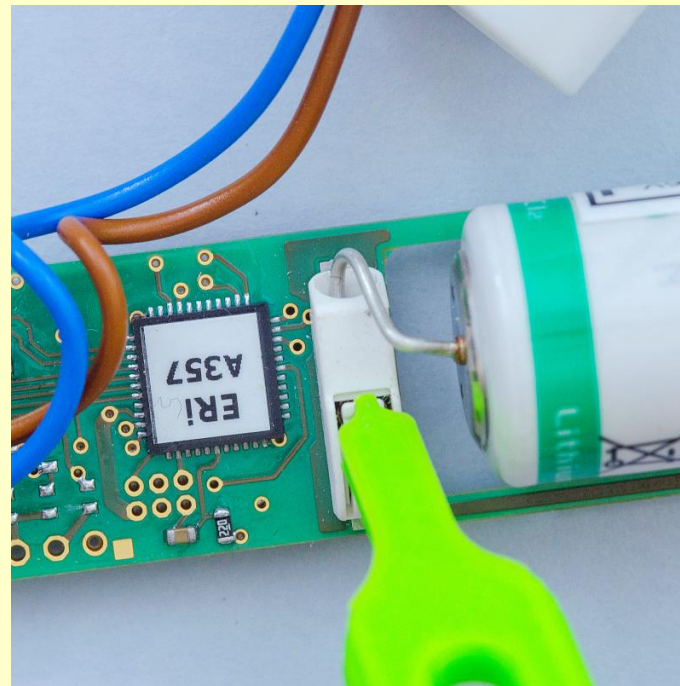
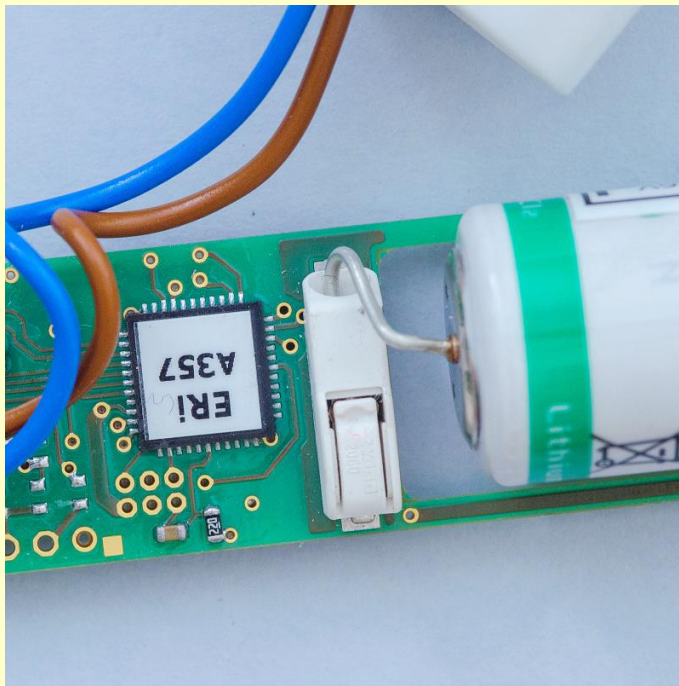
Use special tool. Squeeze the positive battery terminal and remove the battery wire.

Note: The plastic cover of terminals is fragile so they can easy break. Handle with care!



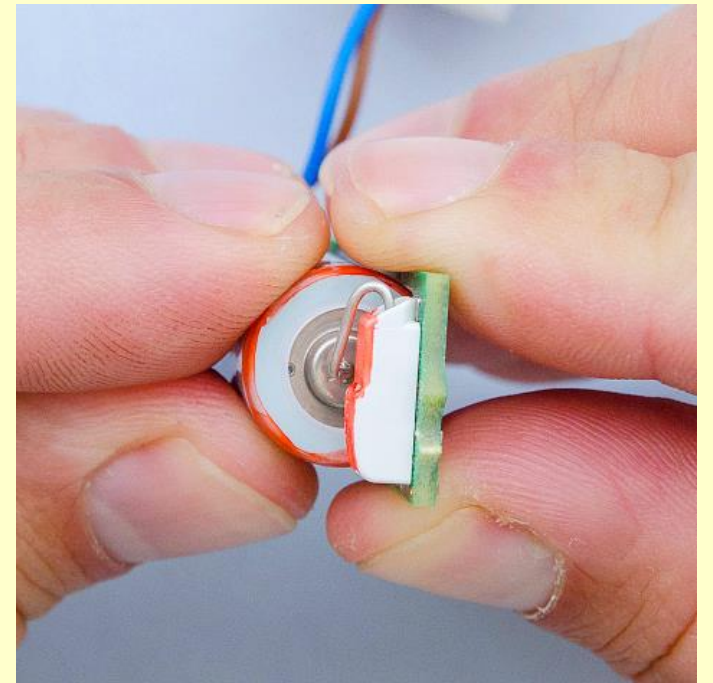
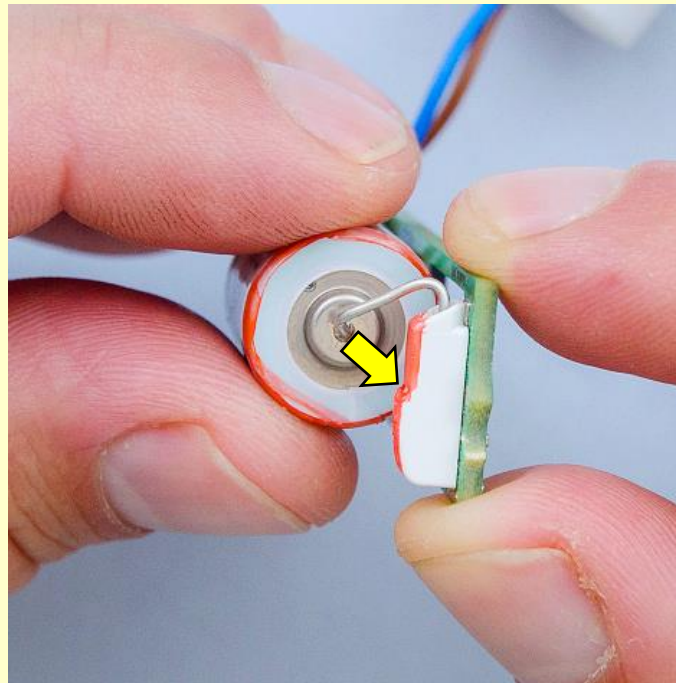
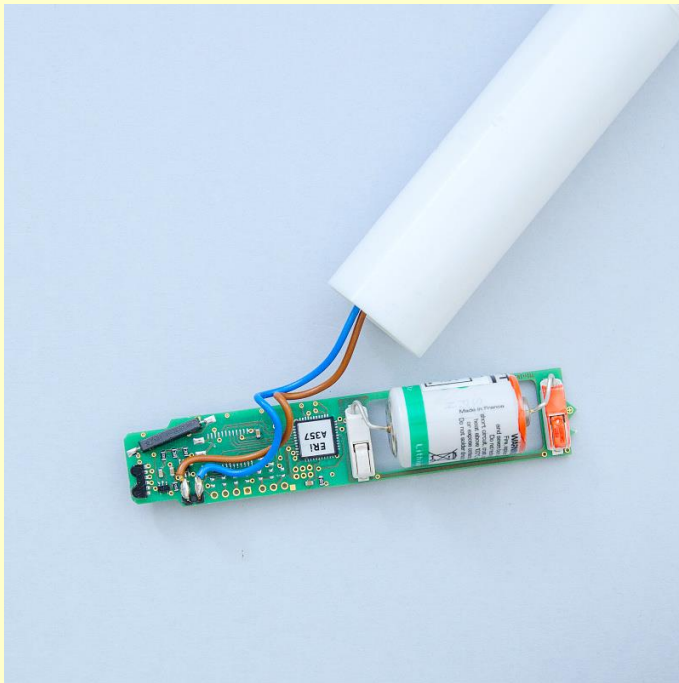
Battery removal

- Squeeze the negative battery terminal and remove the battery wire.
- Remember the battery polarity.



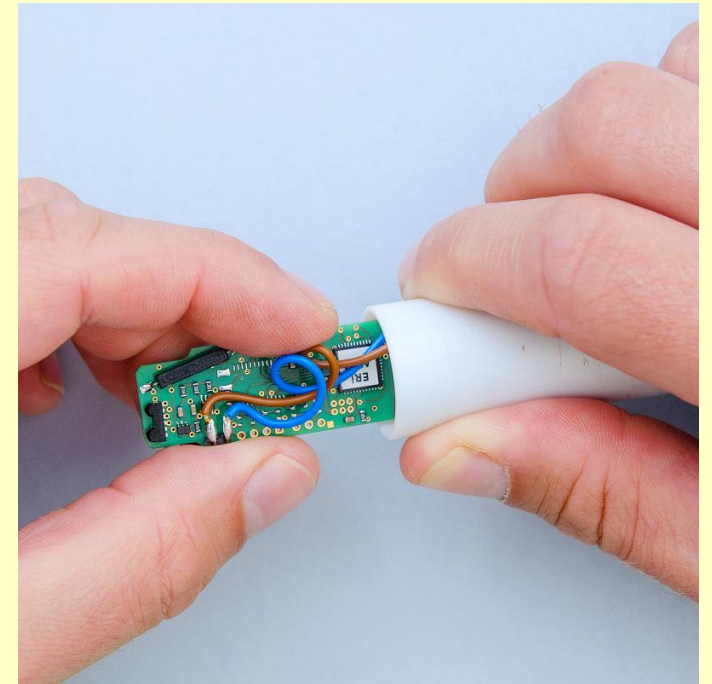
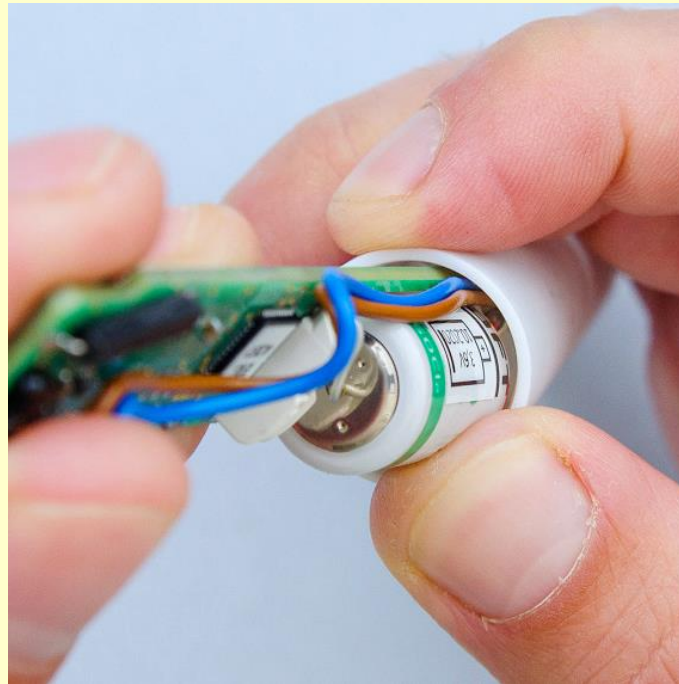
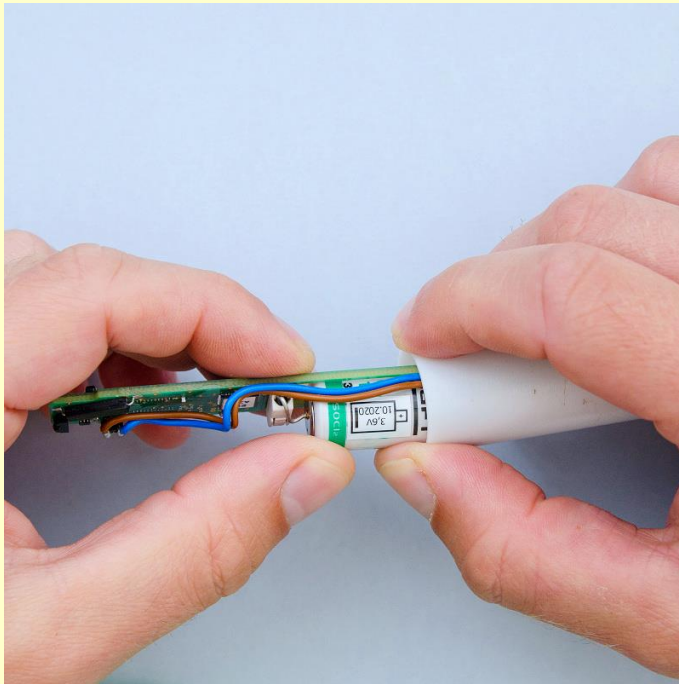
Battery inserting

- Use special tool and gently insert the terminals of new battery.
- Notice the polarity – “+” on the battery (in red) and “+” on the PCB.
- It is good idea to write down the time stamp of battery replacement.
- Gently pull battery into the window in PCB.



Putting back together

- Try to keep the original wire leading:
 - lead the wires between PCB and the battery
 - insert half of electronics into the datalogger case
 - loop the remaining wire.



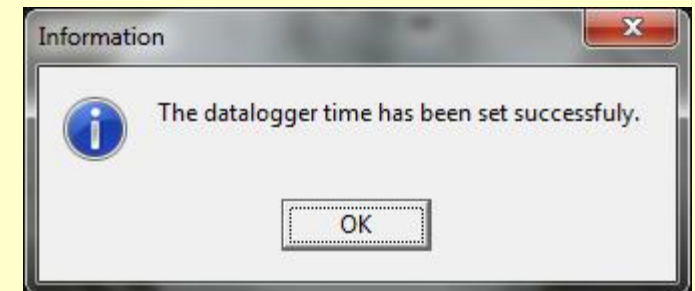
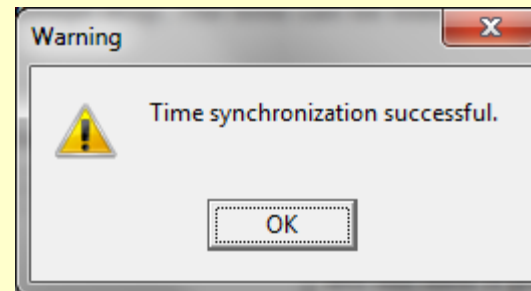
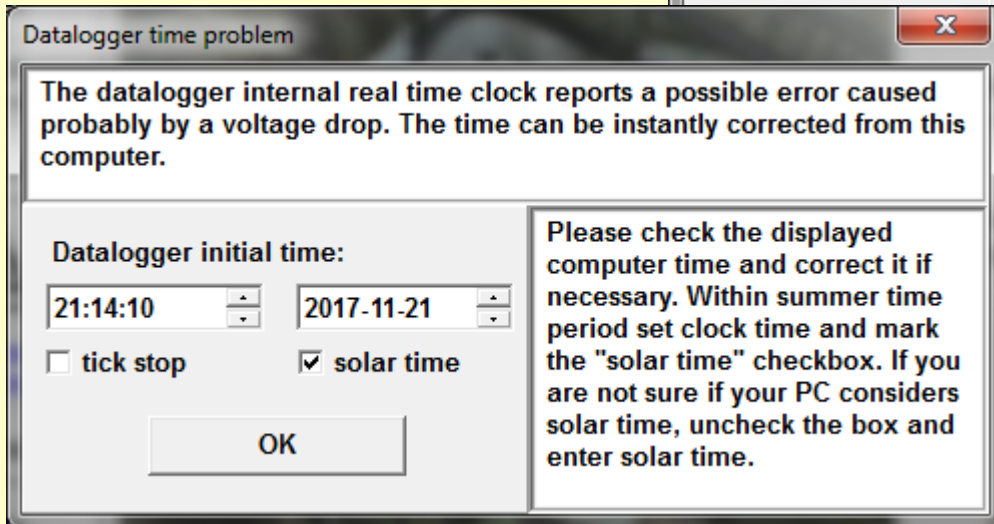
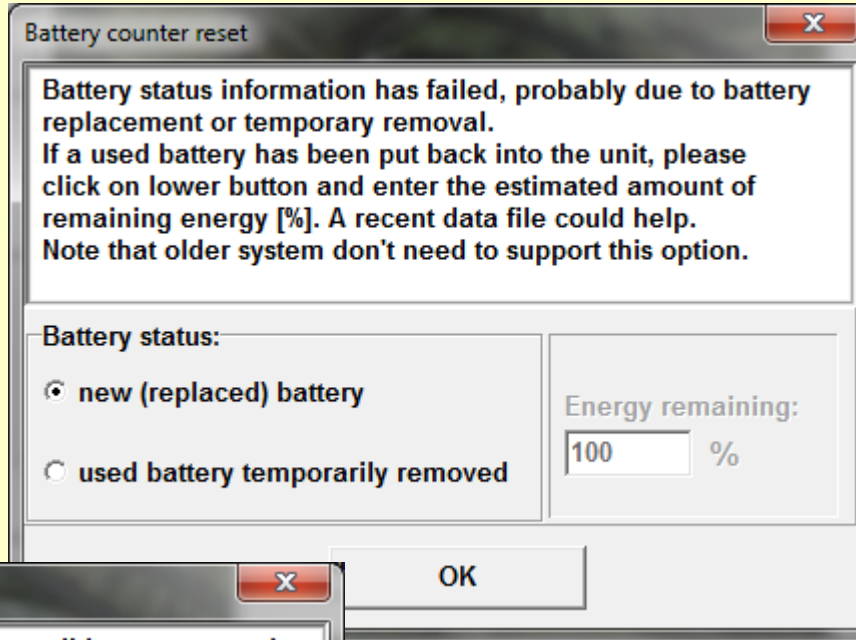
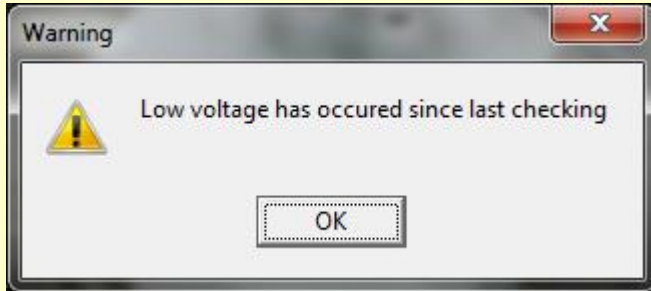
Putting back together

- Insert new desiccant bag and pull electronics into the datalogger case
- Screw up the datalogger plug



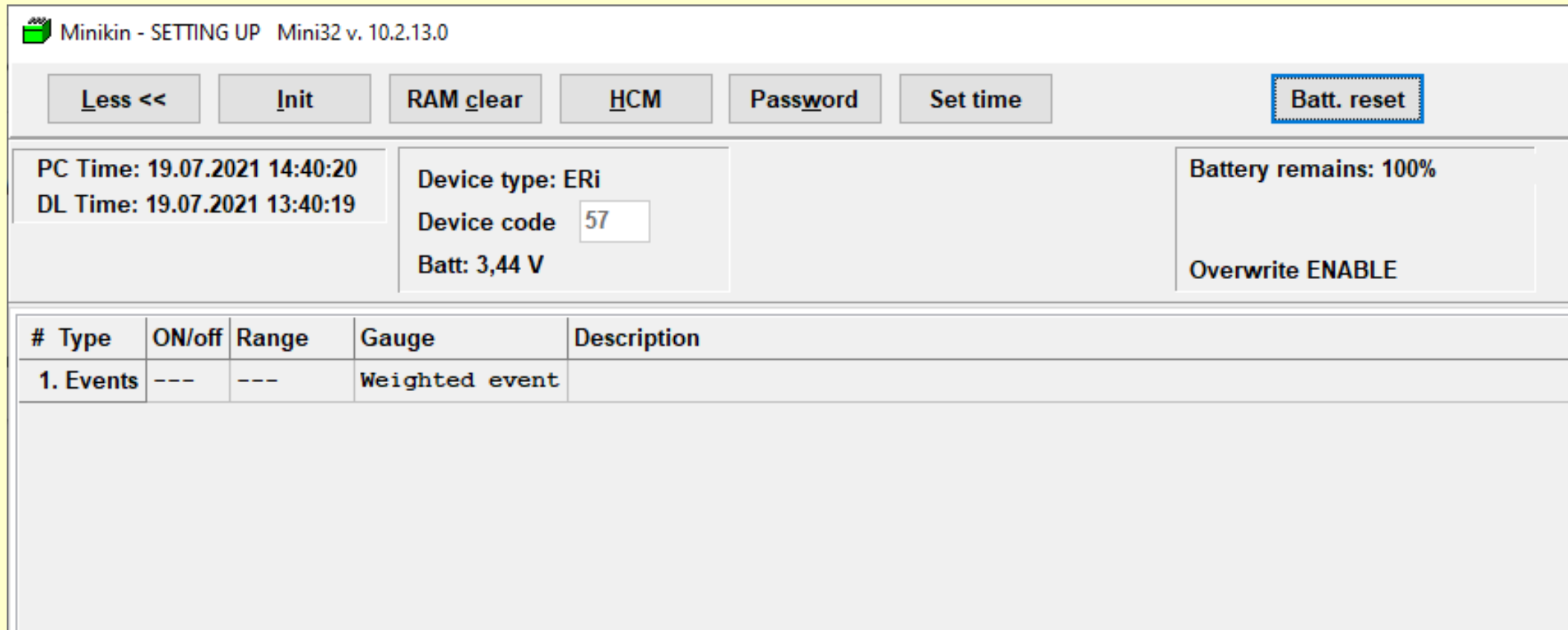
Sensor set up

Run Mini32 and go to Configuration. You will pass following windows and messages – just accept them:



Battery counter

When the battery short circuit has been omitted, you must reset the battery counter manually:
Configuration > More > Batt. reset.



Minikin - SETTING UP Mini32 v. 10.2.13.0

Less << Init RAM clear HCM Password Set time **Batt. reset**

PC Time: 19.07.2021 14:40:20
DL Time: 19.07.2021 13:40:19

Device type: ERi
Device code
Batt: 3,44 V

Battery remains: 100%

Overwrite ENABLE

#	Type	ON/off	Range	Gauge	Description
1.	Events	---	---	Weighted event	

Good luck!