

MicroLog SDI-MP

Battery replacement



EMS Brno, March 2022

Necessary tools and accessories:



Gloves

or



MicroLog
opener



PC and
IrDA/USB cable



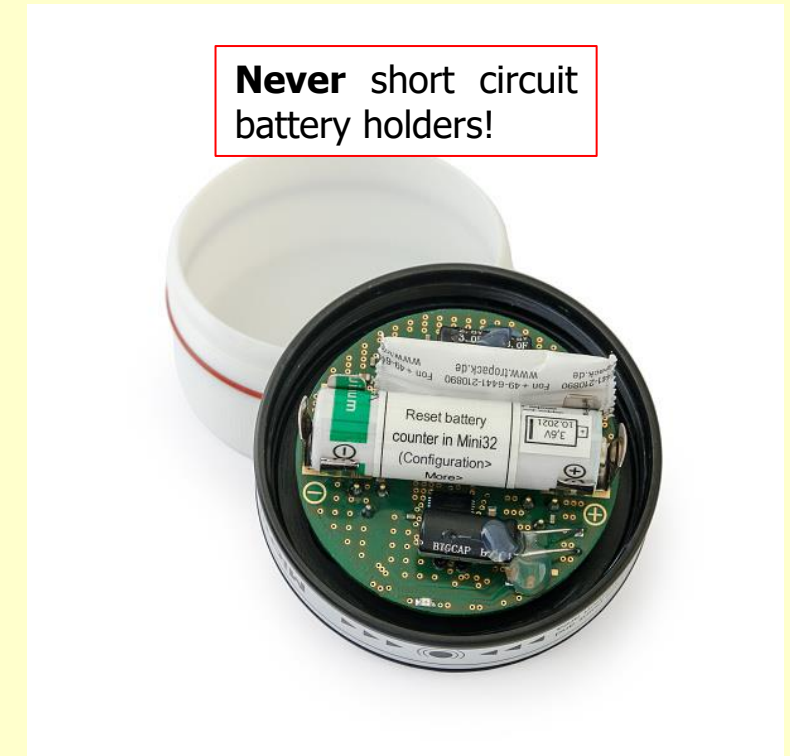
Desiccant bag



Battery
SAFT LS 14500

Datalogger opening

Screw out the datalogger lid by MicroLog opener or by hand (use non-slip gloves for better grip).



Battery replacement

- Remove the old battery from the battery holder. Don't forget to recycle it.
- Insert new battery back to the holder. Consider polarity!
- It is good idea to write down the time stamp of battery replacement (if not from the manufacturer).
- Insert new desiccant bag.



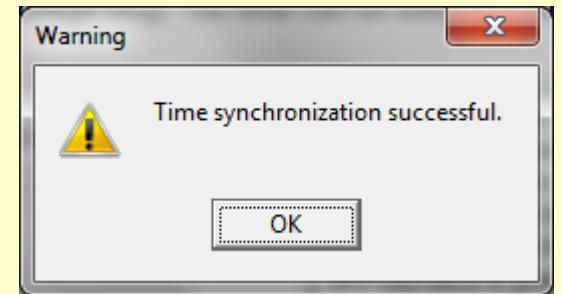
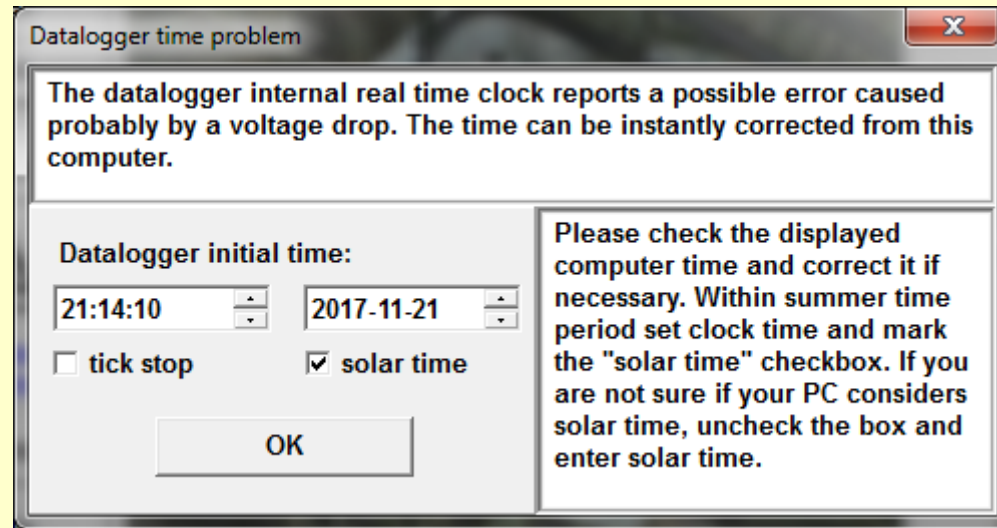
Datalogger closure

Screw up the datalogger lid by hands (do not use opener!). Make sure that both lid thread and seal are clean or clean them by brush.



Datalogger set up

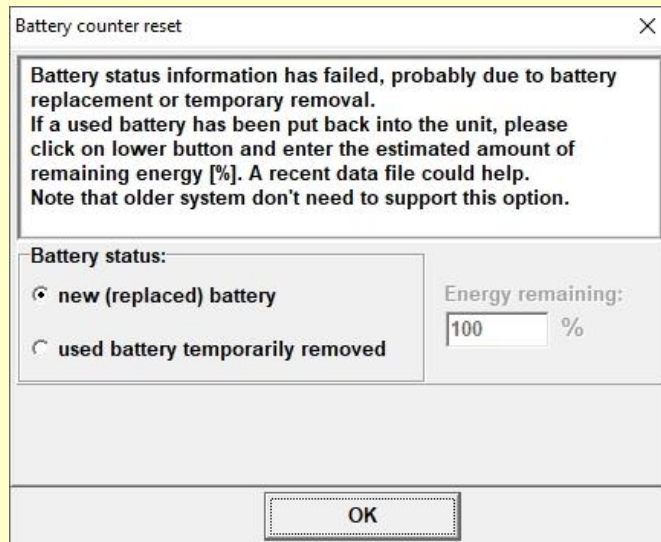
Run Mini32, connect the datalogger by IrDA/USB cable and go to Configuration. You will pass datalogger time synchronization:



Battery counter

The system needs to reset battery counter after power drop-out:

- Choose the battery status of battery
- If inserted battery is used and only temporarily removed, choose this option and set estimated remaining energy (%)



Battery counter reset

Battery status information has failed, probably due to battery replacement or temporary removal.
If a used battery has been put back into the unit, please click on lower button and enter the estimated amount of remaining energy [%]. A recent data file could help.
Note that older system don't need to support this option.

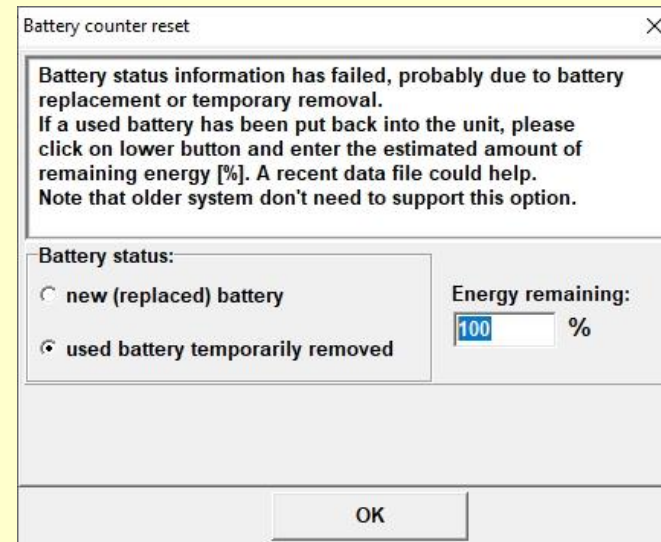
Battery status:

☒ new (replaced) battery

☐ used battery temporarily removed

Energy remaining: 100 %

OK



Battery counter reset

Battery status information has failed, probably due to battery replacement or temporary removal.
If a used battery has been put back into the unit, please click on lower button and enter the estimated amount of remaining energy [%]. A recent data file could help.
Note that older system don't need to support this option.

Battery status:

☐ new (replaced) battery

☒ used battery temporarily removed

Energy remaining: 100 %

OK

If the battery counter reset has not been called automatically after time synchronization, do it through Mini32: Configuration > More > Batt. reset

Note: due to the different number and types of SDI-12 sensors possibly connected, it is unfortunately not possible to display the power consumption and remaining battery life

Final check

Go back to Mini32 main screen and press "On-line" button. Check the actual values and all status information. You can also download the data to make sure that nothing happened with memory structure.

Actual values

Regular reading

☐ el. values

PrgmCalc

Close

PC Time: 14.03.2022 9:17:13
DL Time: 14.03.2022 9:17:12

ON

Device type: SDI-MP
Device code: 78
Batt: 3,48 V

Periods :
measuring 1 h / warm-up 0 s
storing 1 h

Memory capacity: 851 days
Overwrite ENABLE

#	Type	Gauge	Electrical	Physical	Description
1.	SDI-12 1(1)/1	Temperature [°C] EMS33S	22,5093	22,5093	
2.	SDI-12 1(1)/1	Humidity [%] EMS33S	40,0992	40,0992	
3.	SDI-12 2(2)/1	Temperature [°C] EMS33S	22,6099	22,6099	
4.	SDI-12 2(2)/1	Humidity [%] EMS33S	41,1992	41,1992	
5.	SDI-12 3(3)/1	Temperature [°C] EMS33S	22,6689	22,6689	
6.	SDI-12 3(3)/1	Humidity [%] EMS33S	41,1792	41,1792	

Good luck!