



**EMS Brno**

**Data Acquisition Environment**

Hardware – Software – Cloud application

[www.emsbrno.cz](http://www.emsbrno.cz)



## **Replaceable measuring chip for sensors EMS33H, EMS33S, EMS36S and Minikin TH2**

*Chip replacement notes*



**Sensors EMS33H, EMS33S  
and EMS36S**



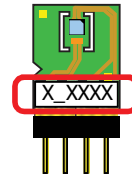
**Minikin TH2**

Note that they are different measuring chip according to sensor type and serial number:

## Sensor EMS33H or EMS33S



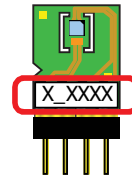
| Sensor S/N                                     | Compatible chip S/N   |
|--|---|
| XXXXXXXXXX                                     | <b>ARXXXX</b><br>and<br><b>ANXXXX</b><br>and<br><b>A_XXXX</b> |
| <b>BXXXXXXXXXX</b><br>or<br><b>NXXXXXXXXXX</b> | <b>B_XXXX</b><br>and<br><b>C_XXXX</b>                         |



## Sensor EMS36S



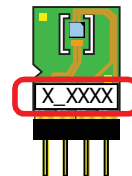
| Sensor S/N         | Compatible chip S/N |
|--------------------|---------------------|
| <b>NXXXXXXXXXX</b> | <b>N_XXXX</b>       |



## Minikin TH2



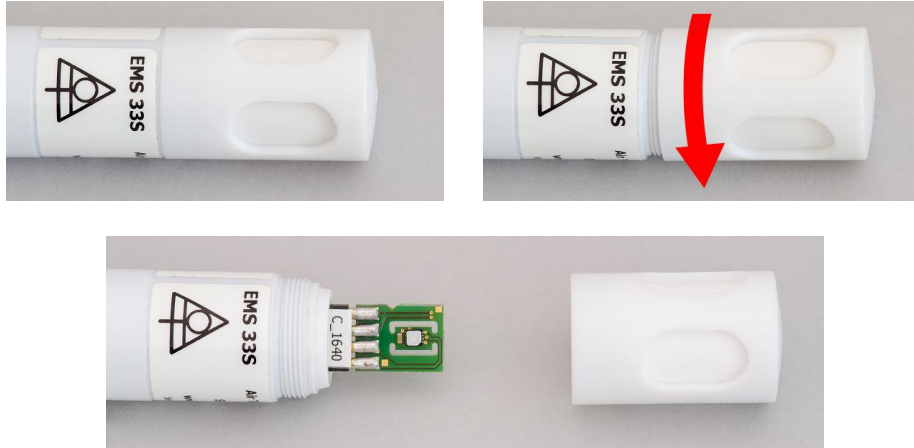
| Sensor S/N | Compatible chip S/N |
|------------|---------------------|
| XXXXXXXXXX | <b>C_XXXX</b>       |



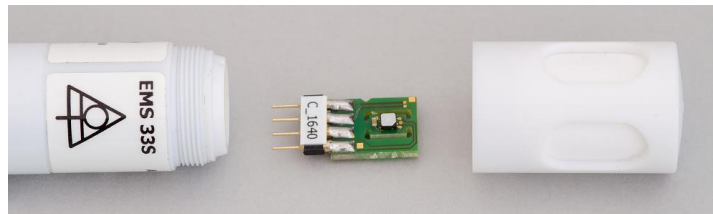
## Sensors EMS33H, EMS33S and EMS36S

### chip replacing procedure

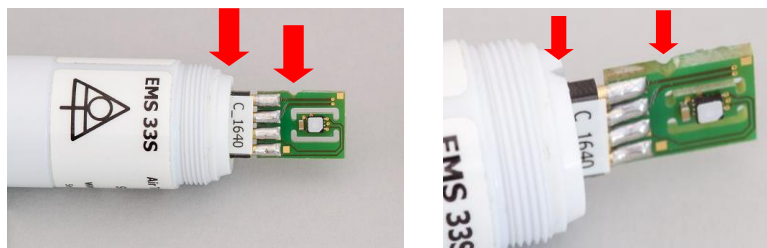
- Remove the sensor from the radiation shield and screw out the dust protective cup:



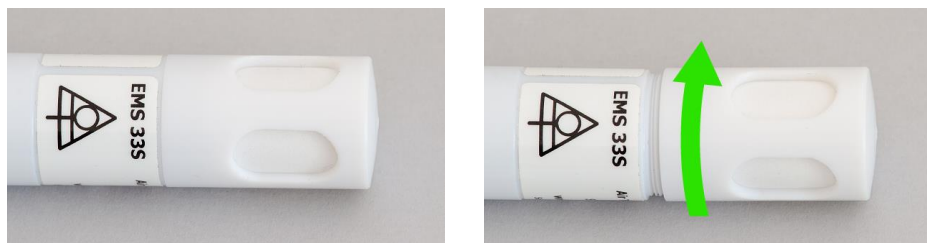
- Pull up the measuring chip (by hand)



- Insert the new sensor to the pin bar. **IMPORTANT!** Note the correct position by cutouts:



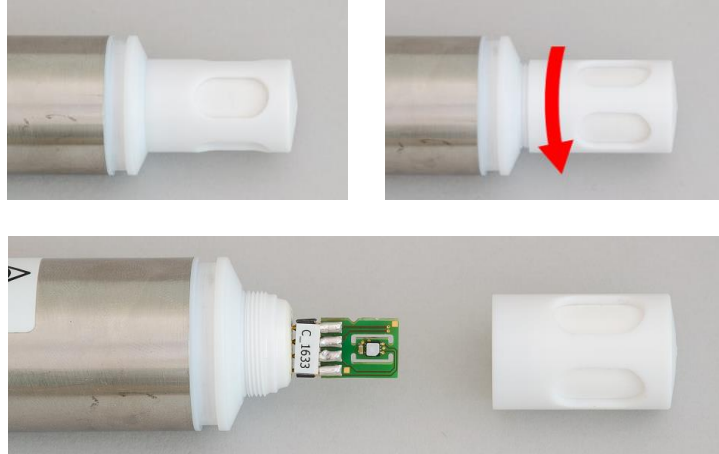
- Screw back the protective cup.



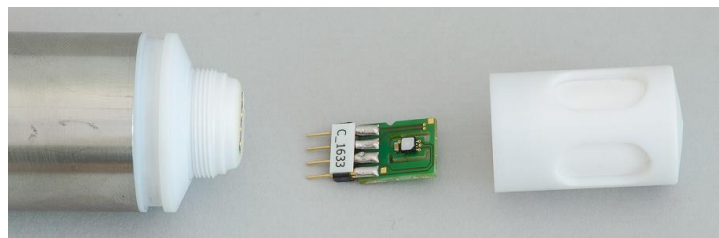
## Minikin TH2

### chip replacing procedure

- Remove the sensor from the radiation shield and screw out the dust protective cup:



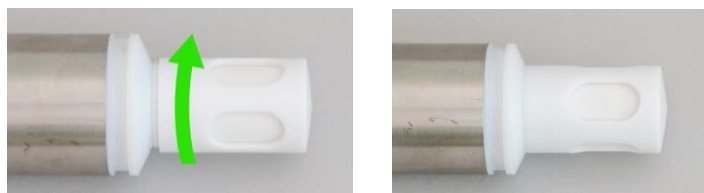
- Pull up the measuring chip (by hand)



- Insert the new sensor to the pin bar. **IMPORTANT!** Note the correct position by mark "▼" and the cutout:



- Screw back the protective cup.



*Michal Bellan, Brno, July 2023*